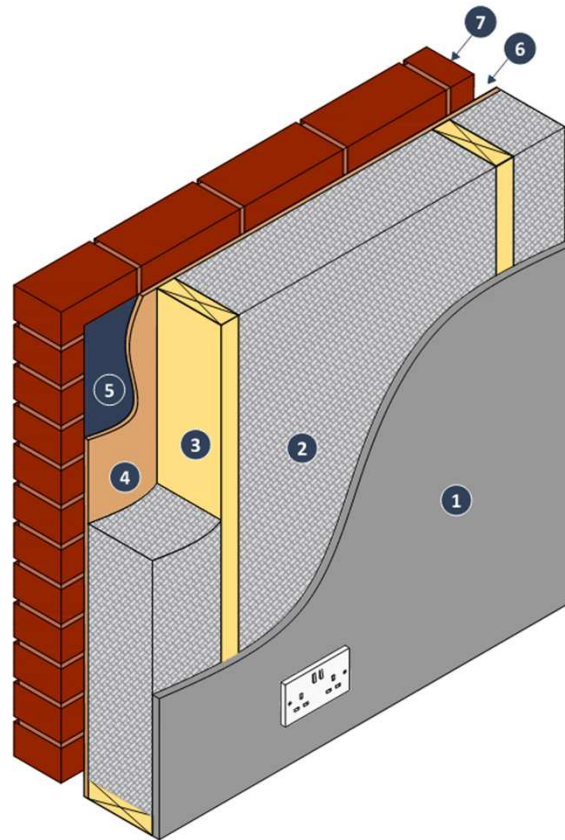


Our Specification: Wall Panel

ALPHA 1 OPEN PANEL - HOUSING

The Alpha open panel timber frame system is our most elementary solution. The system is intended for use in low-to-medium rise buildings. Our factory-made system has been tested on large volume housing projects and is also compliant with current Building Regulations for England, Scotland and Wales.



- 1 15 mm type A plasterboard with VCL or 15 foil-back plasterboard
- 2 Glasswool insulation (insulation options: 0.032, 0.035, 0.040, 0.044 λ)
- 3 38x140mm studs at max 600mm ctrs
- 4 9mm OSB sheathing
- 5 Reflective breather paper
- 6 50mm ventilated cavity
- 7 External masonry cladding

- ✓ Fire tested for 30 min fire protection
- ✓ Air tightness ranging 5.0 - 3.0
- ✓ U-values based on insulation specification, ranging from 0.26 to 0.22
- ✓ Wall thickness 316mm
- ✓ Can be paired with all internal wall types
- ✓ Supply only or supply and install service available
- ✓ Can be paired with all roof types
- ✓ Ground level roof assembly where possible
- ✓ Loose joists, OSB or chipboard clad floor cassettes available
- ✓ U-value and condensation risk calc available

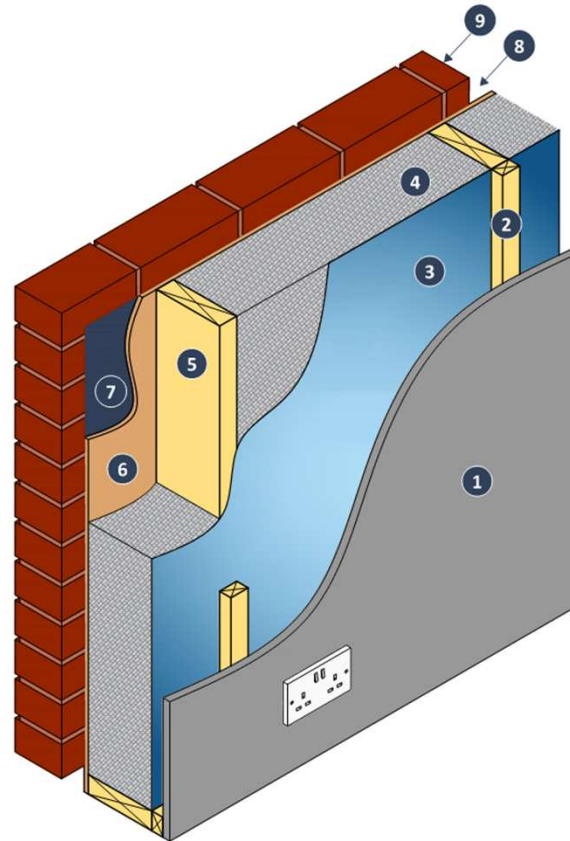
● Factory-fitted by DTS ● Fitted on site by DTS ● Fitted by others on site

Full specification available on request

Our Specification: Wall Panel

ALPHA 2 OPEN PANEL - HOUSING

The Alpha open panel timber frame system is our most elementary solution. The system is intended for use in low-to-medium rise buildings. Our factory-made system has been tested on large volume housing projects and is also compliant with current Building Regulations for England, Scotland and Wales.



- 1 15mm type A plasterboard
- 2 Service zone strapping - 25x38mm battens
- 3 Vapour control layer
- 4 Glasswool insulation (insulation options: 0.032, 0.035, 0.040, 0.044 λ)
- 5 38x140mm studs at max 600mm ctrs
- 6 9mm OSB sheathing
- 7 Reflective breather paper
- 8 50mm ventilated cavity
- 9 External masonry cladding

● Factory-fitted by DTS ● Fitted on site by DTS ● Fitted by others on site



Fire tested for 30 min fire protection



Air tightness ranging 5.0 - 3.0



U-values based on insulation specification, ranging from 0.22 to 0.19



Wall thickness 341mm



Can be paired with all internal wall types



Supply only or supply and install service available



Can be paired with all roof types



Ground level roof assembly where possible



Loose joists, OSB or chipboard clad floor cassettes available



U-value and condensation risk calc available

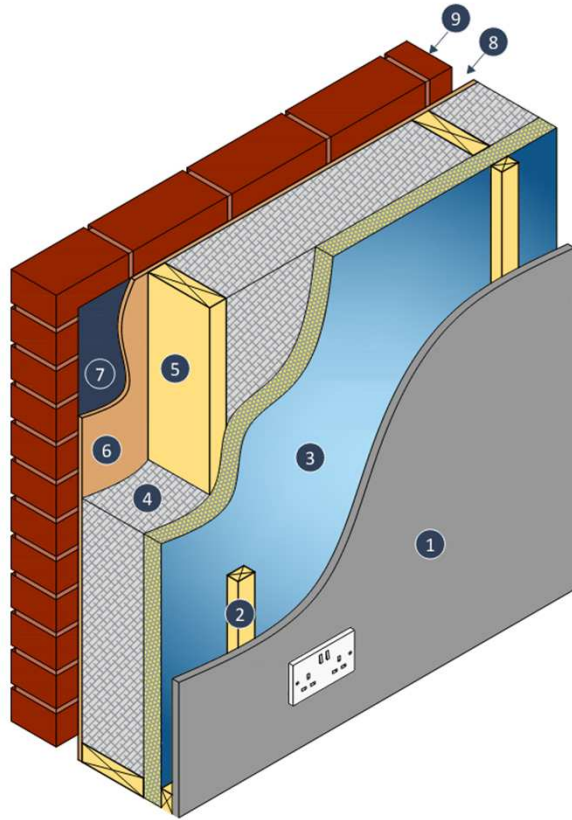
Full specification available on request

Our Specification: Wall Panel

ALPHA 3 OPEN PANEL - HOUSING

The Alpha open panel timber frame system is our most elementary solution. The system is intended for use in low-to-medium rise buildings. Our factory-made system has been tested on large volume housing projects and is also compliant with current Building Regulations for England, Scotland and Wales.

This system improves on the Alpha 2 system by incorporating a layer of PIR to the internal face of the studs. This PIR acts as VCL as well as a thermal break between the studs and the service zone achieving excellent thermal bridging performance (PSI values are available on request).



- 1 15mm type A plasterboard
- 2 Service zone strapping - 25x38mm battens
- 3 Rigid PIR insulation (PIR width options: 20, 25, 30, 35, 40mm)
- 4 Glasswool insulation (insulation options: 0.032, 0.035, 0.040, 0.044 λ)
- 5 38x140mm studs at max 600mm ctrs
- 6 9mm OSB sheathing
- 7 Reflective breather paper
- 8 50mm ventilated cavity
- 9 External masonry cladding

● Factory-fitted by DTS ● Fitted on site by DTS (on request) ● Fitted by others on site

- ✓ Fire tested for 30 min fire protection
- ✓ Air tightness ranging 5.0 - 3.0
- ✓ U-values based on glasswool insulation specification and width of PIR insulation (ranging 0.18 - 0.14)
- ✓ Wall thickness 361 – 381mm
- ✓ Can be paired with all internal wall types
- ✓ Can be paired with all roof types
- ✓ Ground level roof assembly where possible
- ✓ Loose joists, OSB or chipboard clad floor cassettes available
- ✓ U-values and condensation risk calc available
- ✓ Supply only or supply and install service available

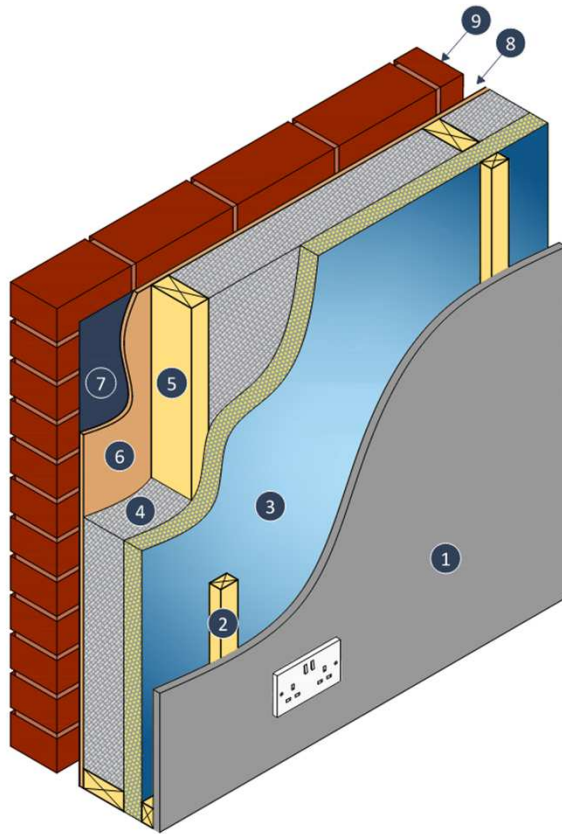
Full specification available on request

Our Specification: Wall Panel

ALPHA 3-89 OPEN PANEL - HOUSING

The Alpha open panel timber frame system is our most elementary solution. The system is intended for use in low-to-medium rise buildings. Our factory-made system has been tested on large volume housing projects and is also compliant with current Building Regulations for England, Scotland and Wales.

This system improves on the Alpha 2 system by incorporating a layer of PIR to the internal face of the studs. This PIR acts as VCL as well as a thermal break between the studs and the service zone achieving excellent thermal bridging performance (PSI values are available on request).



- 1 15mm type A plasterboard
- 2 Service zone strapping - 25x38mm battens
- 3 Rigid PIR insulation (PIR width options: 20, 25, 30, 35, 40mm)
- 4 Glasswool insulation (insulation options: 0.032, 0.035, 0.040, 0.044 λ)
- 5 38x89mm studs at max 600mm ctrs
- 6 9mm OSB sheathing
- 7 Reflective breather paper
- 8 50mm ventilated cavity
- 9 External masonry cladding

● Factory-fitted by DTS ● Fitted on site by DTS (on request) ● Fitted by others on site

- ✓ Fire tested for 30 min fire protection
- ✓ Air tightness ranging 5.0 - 3.0
- ✓ U-values based on glasswool insulation specification and width of PIR insulation (ranging 0.22 - 0.19)
- ✓ Wall thickness 310 – 330mm
- ✓ Can be paired with all internal wall types
- ✓ Can be paired with all roof types
- ✓ Ground level roof assembly where possible
- ✓ Loose joists, OSB or chipboard clad floor cassettes available
- ✓ U-values and condensation risk calc available
- ✓ Supply only or supply and install service available

Full specification available on request

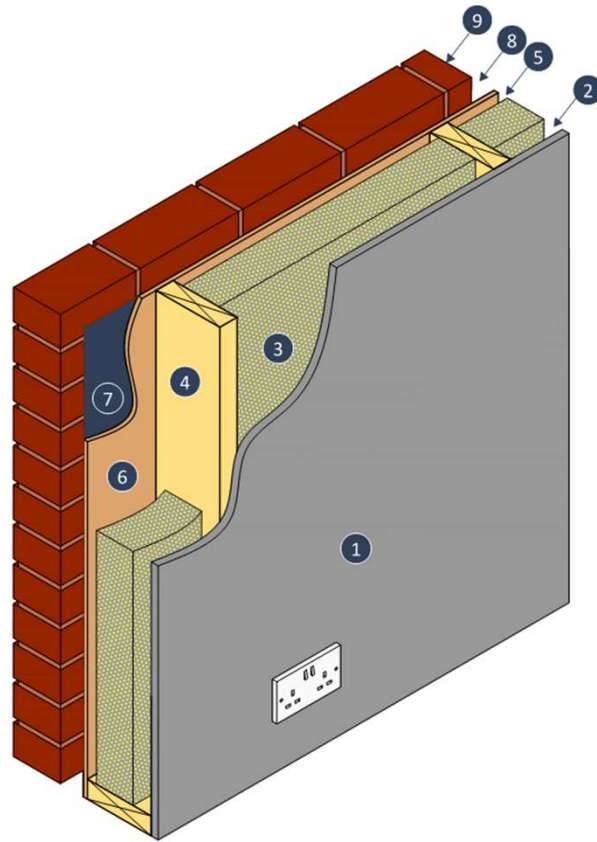
Our Specification: Wall Panel

DELTA 1 PRE-INSULATED PANEL - HOUSING

The Delta pre-insulated wall panel system is a pre-insulated timber frame panel provides a solution to bridge the gap between open panel and closed panel performance.

Designed for developers, housebuilders, and contractors seeking predictable build programmes, energy-efficient solutions, and assured quality, the Delta system combines the advantages of offsite manufacture with on-site adaptability.

Manufactured in our offsite facilities, each panel is engineered for accuracy and pre-fitted with insulation to deliver reliable thermal performance, reduced site labour and consistent build quality.



- 1 15 mm type A plasterboard with VCL or 15 mm foil back plasterboard
- 2 Low-e unvented air gap
- 3 Rigid PIR insulation (width options: 70, 80, 90, 100 mm)
- 4 38x140mm studs at max 600mm ctrs
- 5 20mm low-e unvented air space
- 6 9mm OSB sheathing
- 7 Reflective breather paper
- 8 50mm unvented cavity
- 9 External masonry cladding

- ✓ Fire tested for 30 min fire protection
- ✓ Air tightness ranging from 5.0 to 3.0
- ✓ U-values based on PIR insulation width (ranging 0.22 - 0.19)
- ✓ Wall thickness 316mm
- ✓ Can be paired with all internal wall types
- ✓ Supply only or supply and install service available
- ✓ Can be paired with all roof types
- ✓ Ground level roof assembly where possible
- ✓ OSB or chipboard clad floor cassettes available
- ✓ U-values and condensation calculations available on request

● Factory-fitted by DTS ● Fitted on site by DTS ● Fitted by others on site

Full specification available on request

Our Specification: Wall Panel

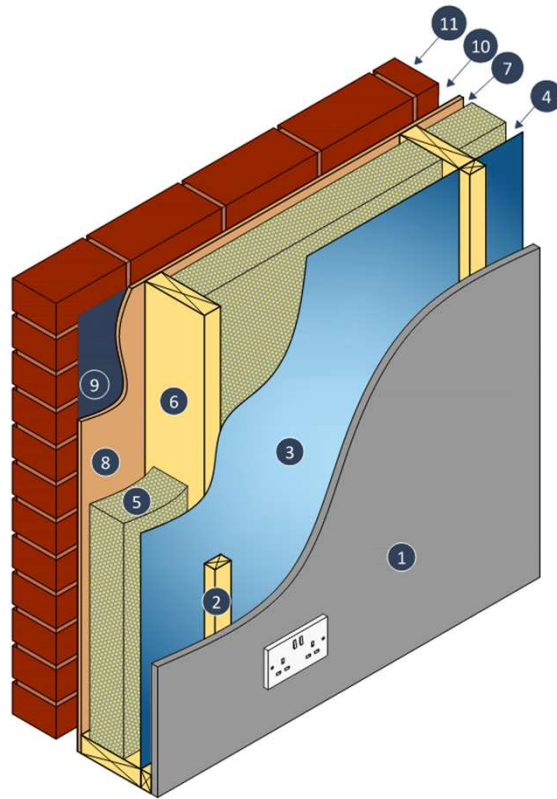
DELTA 2 PRE-INSULATED PANEL - HOUSING

The Delta pre-insulated wall panel system is a pre-insulated timber frame panel provides a solution to bridge the gap between open panel and closed panel performance.

Designed for developers, housebuilders, and contractors seeking predictable build programmes, energy-efficient solutions, and assured quality, the Delta system combines the advantages of offsite manufacture with on-site adaptability.

Manufactured in our offsite facilities, each panel is engineered for accuracy and pre-fitted with insulation to deliver reliable thermal performance, reduced site labour and consistent build quality.

The Delta 2 system improves on Delta 1 by incorporating the service zone which assists thermal performance.



- 1 15mm type A plasterboard
- 2 Service zone strapping - 25x38mm battens
- 3 Vapour control layer (standard or reflective)
- 4 Low-e unvented air gap
- 5 Rigid PIR insulation (width options: 70, 80, 90, 100 mm)
- 6 38x140mm studs at max 600mm ctrs
- 7 20mm low-e unvented air space
- 8 9mm OSB sheathing
- 9 Reflective breather paper
- 10 50mm ventilated cavity
- 11 External masonry cladding

- 🛡️ Fire tested for 30 min fire protection
- 🛡️ Air tightness ranging from 5.0 to 3.0
- 🛡️ U-values based on PIR insulation width (ranging 0.19 - 0.16)
- 🛡️ Wall thickness 341mm
- 🛡️ Can be paired with all internal wall types
- 🛡️ Supply only or supply and install service available
- 🛡️ Can be paired with all roof types
- 🛡️ Ground level roof assembly where possible
- 🛡️ OSB or chipboard clad floor cassettes available
- 🛡️ U-values and condensation calculations available on request

● Factory-fitted by DTS ● Fitted on site by DTS (on request) ● Fitted by others on site

Full specification available on request

Our Specification: Wall Panel

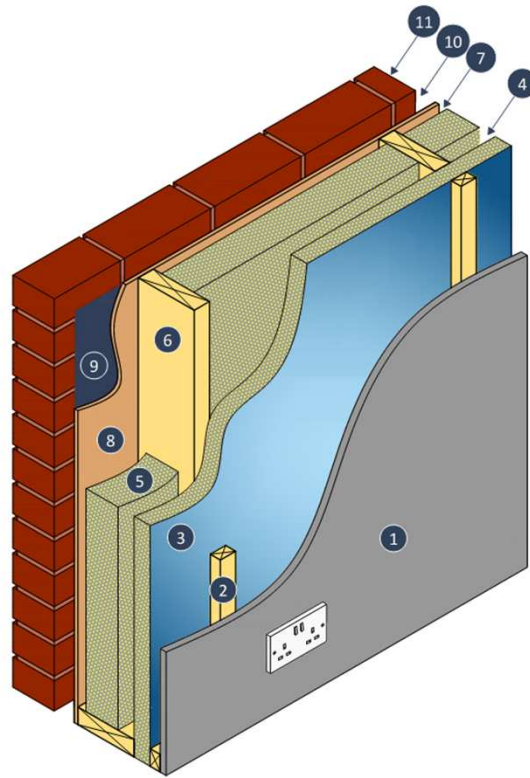
DELTA 3 PRE-INSULATED PANEL - HOUSING

The Delta pre-insulated wall panel system is a pre-insulated timber frame panel provides a solution to bridge the gap between open panel and closed panel performance.

Designed for developers, housebuilders, and contractors seeking predictable build programmes, energy-efficient solutions, and assured quality, the Delta system combines the advantages of offsite manufacture with on-site adaptability.

Manufactured in our offsite facilities, each panel is engineered for accuracy and pre-fitted with insulation to deliver reliable thermal performance, reduced site labour and consistent build quality.

The Delta 3 system improves on Delta 2 by creating a thermal break from the studs to the service zone.



- 1 15mm type A plasterboard
- 2 Service zone strapping - 25x38mm battens
- 3 Rigid PIR insulation (PIR width options: 20, 25, 30, 35, 40 mm)
- 4 Low-e unvented air gap
- 5 Rigid PIR insulation (PIR width options: 70, 80, 90, 100 mm)
- 6 38x140mm studs at max 600mm ctrs
- 7 20mm low-e unvented air space
- 8 9mm OSB sheathing
- 9 Reflective breather paper
- 10 50mm ventilated cavity
- 11 External masonry cladding

- ✓ Fire tested for 30 min fire protection
- ✓ Air tightness ranging from 5.0 to 3.0
- ✓ U-values based on PIR insulation width (ranging 0.16 - 0.13)
- ✓ Wall thickness 361 – 381mm
- ✓ Can be paired with all internal wall types
- ✓ Supply only or supply and install service available
- ✓ Can be paired with all roof types
- ✓ Ground level roof assembly where possible
- ✓ OSB or chipboard clad floor cassettes available
- ✓ U-values and condensation calculations available on request

Full specification available on request

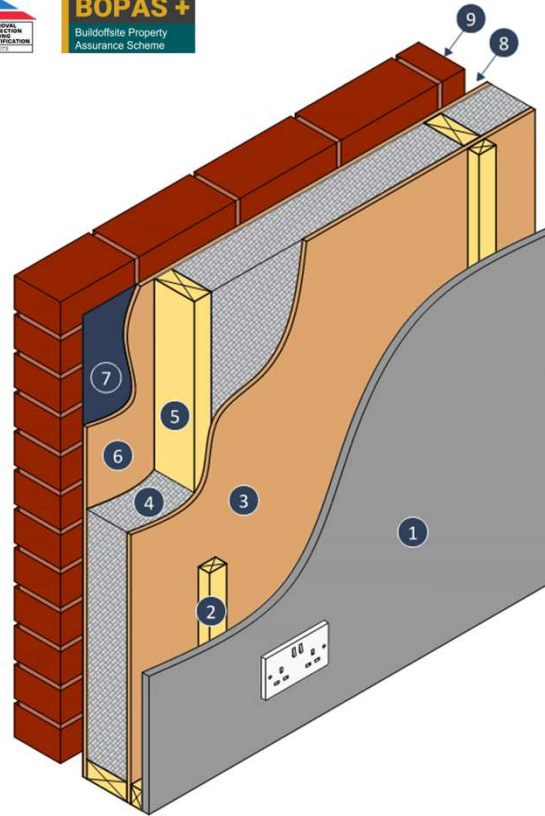
● Factory-fitted by DTS ● Fitted on site by DTS (on request) ● Fitted by others on site

Our Specification: Wall Panel

SIGMA II SOLID STUD (89mm) - CLOSED PANEL - HOUSING

Award-winning, BOPAS+ and BBA approved, closed panel SIGMA® II Build System is the robust and effective solution to achieving superior levels of fabric performance. With excellent thermal performance and air tightness, the Sigma® II Build System offers reduced material and labour costs by using conventional materials in a more innovative manner.

This system is designed to meet the needs of low and medium rise buildings. It comes with the options of further enhancements such as factory fitted windows, chipboard clad floor cassettes and insulated roof cassettes. Our Sigma® II build system is only available as a supply and install service to allow us to take full responsibility for the quality and integrity of all site-fitted works. The Sigma II System can achieve Pre-Manufactured Value (PMV) of 55% without reliance on other trades.



- 1 15mm foil-back plasterboard
- 2 Service zone strapping - 25x38mm battens
- 3 9mm OSB sheathing
- 4 Blown fibre insulation
- 5 38x89mm Studs
- 6 9mm OSB sheathing
- 7 Reflective breather paper
- 8 50mm Ventilated cavity
- 9 External masonry cladding

● Factory-fitted by DTS ● Fitted on site by DTS ● Fitted by others on site

- ✓ Fire tested for 30 min fire protection
- ✓ Service cavity pre-fitted
- ✓ Built-in air tightness detailing and pre-fitted seals
- ✓ U-value: 0.25
- ✓ Wall thickness 299mm
- ✓ BBA backed air tightness of 3
- ✓ Supply and install service only
- ✓ Roof trusses or pre-insulated cassettes
- ✓ Ground level roof assembly
- ✓ OSB or chipboard clad floor cassettes
- ✓ U-values and condensation calculations available on request
- ✓ Potential to air test, immediately after kit erection

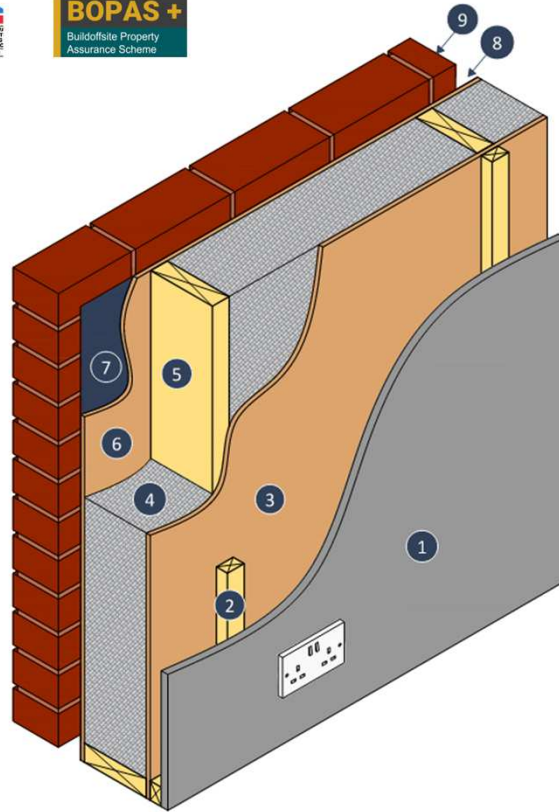
Full specification available on request

Our Specification: Wall Panel

SIGMA II SOLID STUD (140mm) – CLOSED PANEL - HOUSING

Award-winning, BOPAS+ and BBA approved, closed panel SIGMA® II Build System is the robust and effective solution to achieving superior levels of fabric performance. With excellent thermal performance and air tightness, the Sigma® II Build System offers reduced material and labour costs by using conventional materials in a more innovative manner.

This system is designed to meet the needs of low and medium rise buildings. It comes with the options of further enhancements such as factory fitted windows, chipboard clad floor cassettes and insulated roof cassettes. Our Sigma® II build system is only available as a supply and install service to allow us to take full responsibility for the quality and integrity of all site-fitted works. The Sigma II System can achieve Pre-Manufactured Value (PMV) of 55% without reliance on other trades.



- 1 15mm foil-back plasterboard
- 2 Service zone strapping - 25x38mm battens
- 3 9mm OSB sheathing
- 4 Blown fibre insulation
- 5 38x140mm studs
- 6 9mm OSB sheathing
- 7 Reflective breather paper
- 8 50mm ventilated cavity
- 9 External masonry cladding

● Factory-fitted by DTS ● Fitted on site by DTS ● Fitted by others on site

- ✓ **Fire tested for 30 min fire protection**
- ✓ Service cavity pre-fitted
- ✓ Built-in air tightness detailing and pre-fitted seals
- ✓ U-value: 0.19
- ✓ Wall thickness 350mm
- ✓ BBA backed air tightness of 3
- ✓ Supply and install service only
- ✓ Roof trusses or pre-insulated cassettes
- ✓ Ground level roof assembly
- ✓ OSB or chipboard clad floor cassettes
- ✓ U-values and condensation calculations available on request
- ✓ Potential to air test, immediately after kit erection

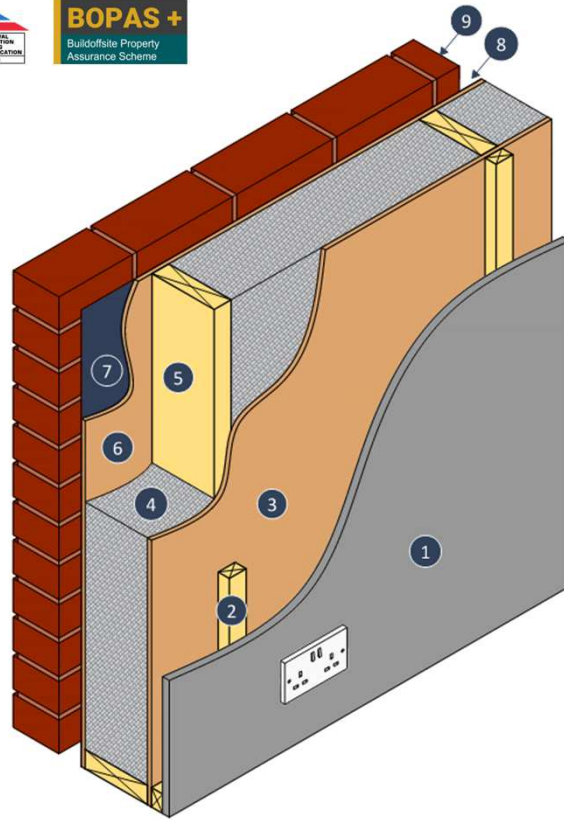
Full specification available on request

Our Specification: Wall Panel

SIGMA II SOLID STUD (184mm) – CLOSED PANEL - HOUSING

Award-winning, BOPAS+ and BBA approved, Sigma® II closed panel timber frame system represents the highest level of technical performance within the Donaldson Timber Systems product portfolio. Developed through years of research, testing, and collaboration with leading industry bodies, Sigma® II provides a fully engineered, factory-finished building fabric designed to deliver high thermal efficiency, structural integrity, and regulatory compliance under the Future Homes Standard.

This system is designed to meet the needs of low and medium rise buildings. It comes with the options of further enhancements such as factory fitted windows, chipboard clad floor cassettes and insulated roof cassettes. Our Sigma® II build system is only available as a supply and install service to allow us to take full responsibility for the quality and integrity of all site-fitted works. The Sigma II System can achieve Pre-Manufactured Value (PMV) of 55% without reliance on other trades.



- 1 15mm foil-back plasterboard
- 2 Service zone strapping - 25x38mm battens
- 3 9mm OSB sheathing
- 4 Blown fibre insulation
- 5 38x184mm studs
- 6 9mm OSB sheathing
- 7 Reflective breather paper
- 8 50mm ventilated cavity
- 9 External masonry cladding

● Factory-fitted by DTS ● Fitted on site by DTS ● Fitted by others on site

- ✓ Fire tested for 30 min fire protection
- ✓ Service cavity pre-fitted
- ✓ Built-in air tightness detailing and pre-fitted seals
- ✓ U-value: 0.16
- ✓ Wall thickness 394mm
- ✓ BBA backed air tightness of 3
- ✓ Supply and install service only
- ✓ Roof trusses or pre-insulated cassettes
- ✓ Ground level roof assembly
- ✓ OSB or chipboard clad floor cassettes
- ✓ U-values and condensation calculations available on request
- ✓ Potential to air test, immediately after kit erection

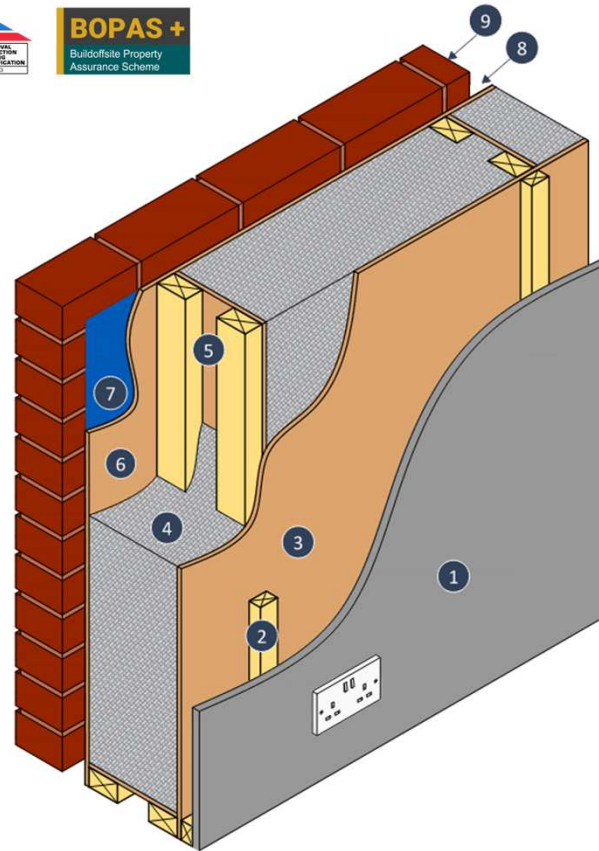
Full specification available on request

Our Specification: Wall Panel

SIGMA II C-STUD (195mm) – CLOSED PANEL - HOUSING

Award-winning, BOPAS+ and BBA approved, Sigma® II closed panel timber frame system represents the highest level of technical performance within the Donaldson Timber Systems product portfolio. Developed through years of research, testing, and collaboration with leading industry bodies, Sigma® II provides a fully engineered, factory-finished building fabric designed to deliver high thermal efficiency, structural integrity, and regulatory compliance under the Future Homes Standard.

This system is designed to meet the needs of low and medium rise buildings. It comes with the options of further enhancements such as factory fitted windows, chipboard clad floor cassettes and insulated roof cassettes. Our Sigma® II build system is only available as a supply and install service to allow us to take full responsibility for the quality and integrity of all site-fitted works. The Sigma II System can achieve Pre-Manufactured Value (PMV) of 55% without reliance on other trades.



- 1 15mm foil-back plasterboard
- 2 Service zone strapping - 25x38mm battens
- 3 9mm OSB sheathing
- 4 Blown fibre insulation
- 5 47x195mm C-Stud
- 6 9mm OSB sheathing
- 7 Reflective breather paper
- 8 50mm ventilated cavity
- 9 External masonry cladding

● Factory-fitted by DTS ● Fitted on site by DTS ● Fitted by others on site

- ✓ Fire tested for 30 min fire protection
- ✓ Service cavity pre-fitted
- ✓ Built-in air tightness detailing and pre-fitted seals
- ✓ U-value: 0.14
- ✓ Wall thickness 405mm
- ✓ BBA backed air tightness of 3
- ✓ Excellent thermal bridge performance
- ✓ Supply and install service only
- ✓ Roof trusses or pre-insulated cassettes
- ✓ Ground level roof assembly
- ✓ OSB or chipboard clad floor cassettes
- ✓ U-values and condensation calculations available on request
- ✓ Potential to air test, immediately after kit erection

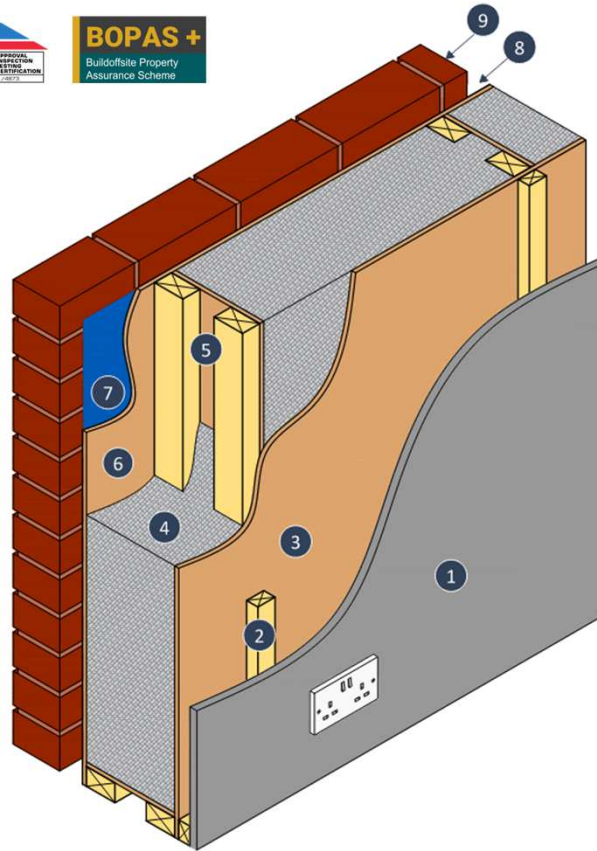
Full specification available on request

Our Specification: Wall Panel

SIGMA II C-STUD (235mm) – CLOSED PANEL - HOUSING

Award-winning, BOPAS+ and BBA approved, Sigma® II closed panel timber frame system represents the highest level of technical performance within the Donaldson Timber Systems product portfolio. Developed through years of research, testing, and collaboration with leading industry bodies, Sigma® II provides a fully engineered, factory-finished building fabric designed to deliver high thermal efficiency, structural integrity, and regulatory compliance under the Future Homes Standard.

This system is designed to meet the needs of low and medium rise buildings. It comes with the options of further enhancements such as factory fitted windows, chipboard clad floor cassettes and insulated roof cassettes. Our Sigma® II build system is only available as a supply and install service to allow us to take full responsibility for the quality and integrity of all site-fitted works. The Sigma II System can achieve Pre-Manufactured Value (PMV) of 55% without reliance on other trades.



- 1 15mm foil-back plasterboard
- 2 Service zone strapping - 25x38mm battens
- 3 9mm OSB sheathing
- 4 Blown fibre insulation
- 5 47x235mm C-Stud
- 6 9mm OSB sheathing
- 7 Reflective breather paper
- 8 50mm ventilated cavity
- 9 External masonry cladding

- ✓ Fire tested for 30 min fire protection
- ✓ Service cavity pre-fitted
- ✓ Built-in air tightness detailing and pre-fitted seals
- ✓ U-value: 0.12
- ✓ Wall thickness 445mm
- ✓ BBA backed air tightness of 3
- ✓ Excellent thermal bridge performance
- ✓ Supply and install service only
- ✓ Roof trusses or pre-insulated cassettes
- ✓ Ground level roof assembly
- ✓ OSB or chipboard clad floor cassettes
- ✓ U-values and condensation calculations available on request
- ✓ Potential to air test, immediately after kit erection

● Factory-fitted by DTS ● Fitted on site by DTS ● Fitted by others on site

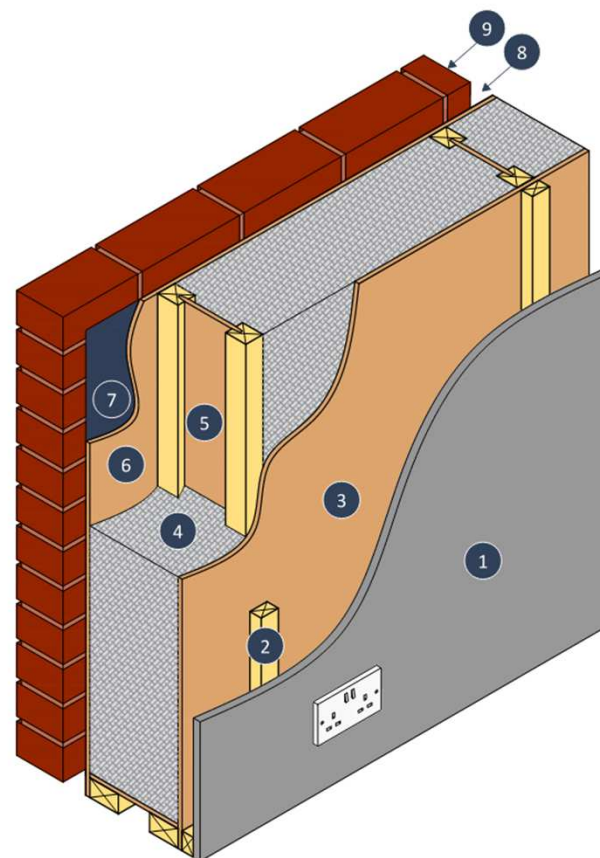
Full specification available on request

Our Specification: Wall Panel

SIGMA II I-STUD (195mm) – CLOSED PANEL - HOUSING

The Sigma® II closed panel timber frame system represents the highest level of technical performance within the Donaldson Timber Systems product portfolio. Developed through years of research, testing, and collaboration with leading industry bodies, Sigma® II provides a fully engineered, factory-finished building fabric designed to deliver high thermal efficiency, structural integrity, and regulatory compliance under the Future Homes Standard.

This system is designed to meet the needs of low and medium rise buildings. It comes with the options of further enhancements such as factory fitted windows, chipboard clad floor cassettes and insulated roof cassettes. Our Sigma® II build system is only available as a supply and install service to allow us to take full responsibility for the quality and integrity of all site-fitted works. The Sigma II System can achieve Pre-Manufactured Value (PMV) of 55% without reliance on other trades.



- 1 15mm foil-back plasterboard
- 2 Service zone strapping - 25x38mm battens
- 3 9mm OSB sheathing
- 4 Blown fibre insulation
- 5 47x195 mm I-Stud
- 6 9mm OSB sheathing
- 7 Reflective breather paper
- 8 50mm ventilated cavity
- 9 External masonry cladding

● Factory-fitted by DTS ● Fitted on site by DTS ● Fitted by others on site

- ✓ Fire tested for 30 min fire protection
- ✓ Service cavity pre-fitted
- ✓ Built-in air tightness detailing and pre-fitted seals
- ✓ U-value: 0.15
- ✓ Wall thickness 405mm
- ✓ Excellent thermal bridge performance
- ✓ Supply and install service only
- ✓ Roof trusses or pre-insulated cassettes
- ✓ Ground level roof assembly
- ✓ OSB or chipboard clad floor cassettes
- ✓ U-values and condensation calculations available on request
- ✓ Potential to air test, immediately after kit erection

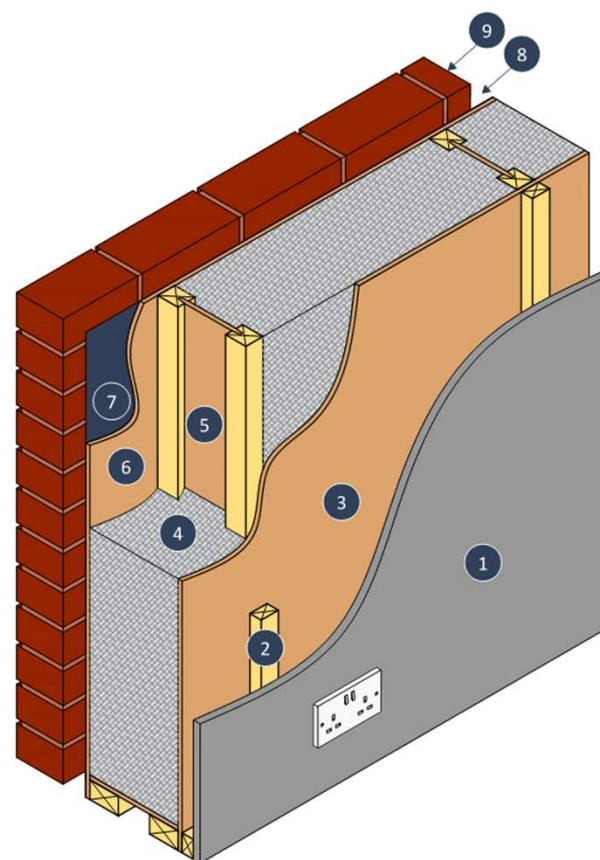
Full specification available on request

Our Specification: Wall Panel

SIGMA II I-STUD (235mm) – CLOSED PANEL - HOUSING

The Sigma® II closed panel timber frame system represents the highest level of technical performance within the Donaldson Timber Systems product portfolio. Developed through years of research, testing, and collaboration with leading industry bodies, Sigma® II provides a fully engineered, factory-finished building fabric designed to deliver high thermal efficiency, structural integrity, and regulatory compliance under the Future Homes Standard.

This system is designed to meet the needs of low and medium rise buildings. It comes with the options of further enhancements such as factory fitted windows, chipboard clad floor cassettes and insulated roof cassettes. Our Sigma® II build system is only available as a supply and install service to allow us to take full responsibility for the quality and integrity of all site-fitted works. The Sigma II System can achieve Pre-Manufactured Value (PMV) of 55% without reliance on other trades.



- 1 15mm foil-back plasterboard
- 2 Service zone strapping - 25x38mm battens
- 3 9mm OSB sheathing
- 4 Blown fibre insulation
- 5 47x235 mm I-Stud
- 6 9mm OSB sheathing
- 7 Reflective breather paper
- 8 50mm ventilated cavity
- 9 External masonry cladding

● Factory-fitted by DTS ● Fitted on site by DTS ● Fitted by others on site

- ✓ Fire tested for 30 min fire protection
- ✓ Service cavity pre-fitted
- ✓ Built-in air tightness detailing and pre-fitted seals
- ✓ U-value: 0.13
- ✓ Wall thickness 445mm
- ✓ Excellent thermal bridge performance
- ✓ Supply and install service only
- ✓ Roof trusses or pre-insulated cassettes
- ✓ Ground level roof assembly
- ✓ OSB or chipboard clad floor cassettes
- ✓ U-values and condensation calculations available on request
- ✓ Potential to air test, immediately after kit erection

Full specification available on request