

## Alpha 1 : Open Wall Panel

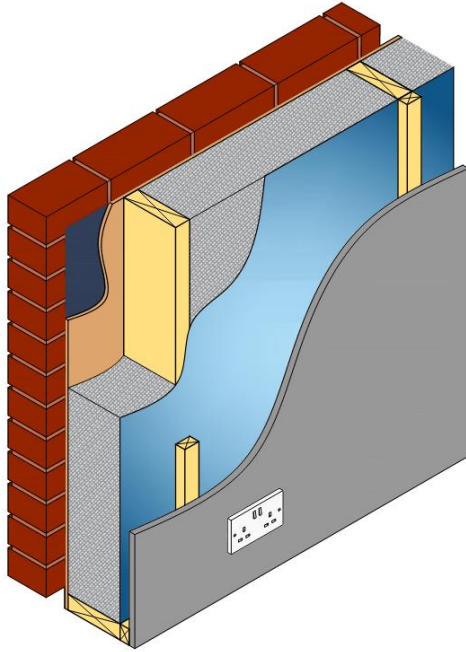
The Psi values shown opposite represent key junctions within a building for this specific wall system.

Please refer to your supply chain partners for PSI values relating to their element of your project e.g.: Slab edge, GRP Dormer, Balcony etc.

Detailed Psi value calculations are available upon placement of order.

## Psi Values

ID	Junction Description	SAP 10 'default' values $\Psi$	Alpha 1 $\Psi$
E02	Other lintels (Steel)	1.000	0.286
E02	Other lintels (Timber)	1.000	0.081
E02i	Other lintels (Timber) Insulated		0.076
E03	Sill	0.100	0.039
E03i	Sill Insulated		0.036
E04	Jamb	0.100	0.053
E04i	Jamb Insulated		0.053
E06	Intermediate floor within a dwelling	0.140	0.049
E10	Eaves (insulation at ceiling level)	0.120	0.065
E12	Gable (insulation at ceiling level)	0.250	0.065
E16	Corner (normal)	0.180	0.068
E17	Corner (inverted – internal area greater than external area)	0.000	-0.029
E18	Party wall between dwellings	0.240	0.129
E20	Exposed floor (normal)	0.320	0.050
E21	Exposed floor (inverted)	0.320	0.094



## Alpha 2 : Open Wall Panel

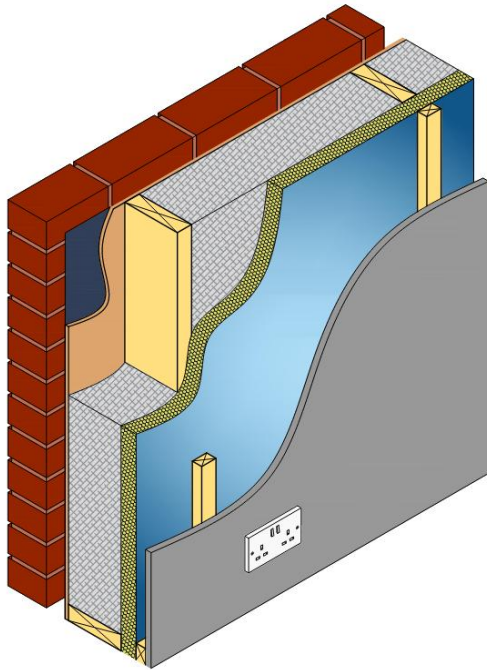
The Psi values shown opposite represent key junctions within a building for this specific wall system.

Please refer to your supply chain partners for PSI values relating to their element of your project e.g.: Slab edge, GRP Dormer, Balcony etc.

Detailed Psi value calculations are available upon placement of order.

## Psi Values

ID	Junction Description	SAP 10 'default' values $\Psi$	Alpha 2 $\Psi$
E02	Other lintels (Steel)	1.000	0.225
E02	Other lintels (Timber)	1.000	0.067
E02i	Other lintels (Timber) Insulated		0.062
E03	Sill	0.100	0.025
E03i	Sill Insulated		0.022
E04	Jamb	0.100	0.040
E04i	Jamb Insulated		0.034
E06	Intermediate floor within a dwelling	0.140	0.039
E10	Eaves (insulation at ceiling level)	0.120	0.063
E12	Gable (insulation at ceiling level)	0.250	0.063
E16	Corner (normal)	0.180	0.065
E17	Corner (inverted – internal area greater than external area)	0.000	-0.039
E18	Party wall between dwellings	0.240	0.108
E20	Exposed floor (normal)	0.320	0.053
E21	Exposed floor (inverted)	0.320	0.085



## Alpha 3 : Open Wall Panel

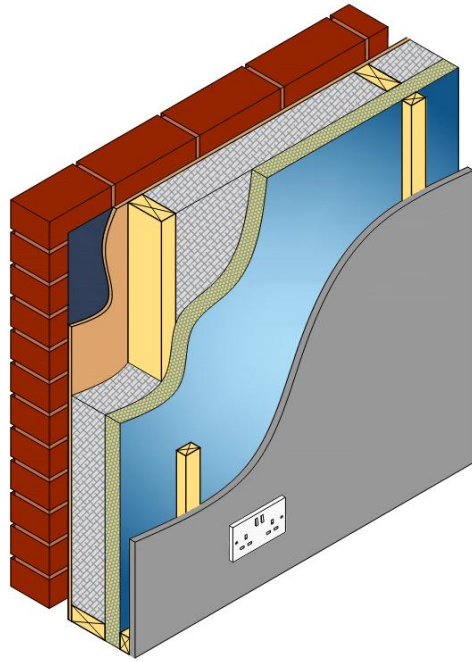
The Psi values shown opposite represent key junctions within a building for this specific wall system.

Please refer to your supply chain partners for PSI values relating to their element of your project e.g.: Slab edge, GRP Dormer, Balcony etc.

Detailed Psi value calculations are available upon placement of order.

## Psi Values

ID	Junction Description	SAP 10 'default' values $\Psi$	Alpha 3 $\Psi$
E02	Other lintels (Steel)	1.000	0.196
E02	Other lintels (Timber)	1.000	0.067
E02i	Other lintels (Timber) Insulated		0.069
E03	Sill	0.100	0.035
E03i	Sill Insulated		0.038
E04	Jamb	0.100	0.045
E04i	Jamb Insulated		0.040
E06	Intermediate floor within a dwelling	0.140	0.024
E10	Eaves (insulation at ceiling level)	0.120	0.052
E12	Gable (insulation at ceiling level)	0.250	0.047
E16	Corner (normal)	0.180	0.042
E17	Corner (inverted – internal area greater than external area)	0.000	-0.039
E18	Party wall between dwellings	0.240	0.089
E20	Exposed floor (normal)	0.320	0.039
E21	Exposed floor (inverted)	0.320	0.070



## Alpha 3-89 : Open Wall Panel

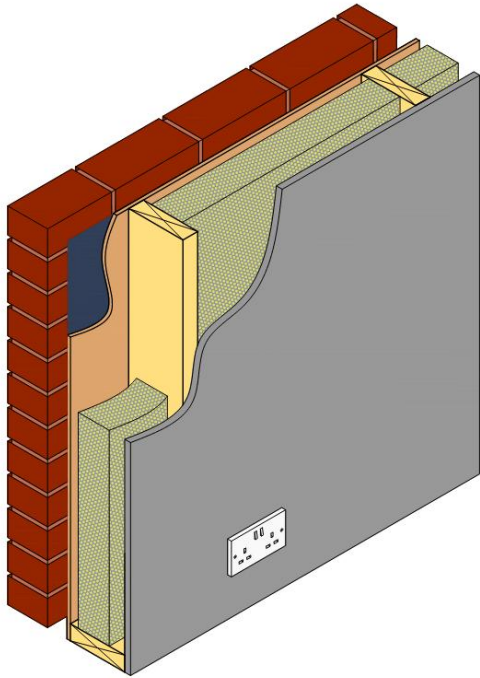
The Psi values shown opposite represent key junctions within a building for this specific wall system.

Please refer to your supply chain partners for PSI values relating to their element of your project e.g.: Slab edge, GRP Dormer, Balcony etc.

Detailed Psi value calculations are available upon placement of order.

## Psi Values

ID	Junction Description	SAP 10 'default' values $\Psi$	Alpha 3 $\Psi$
E02	Other lintels (Steel)	1.000	
E02	Other lintels (Timber)	1.000	
E02i	Other lintels (Timber) Insulated		
E03	Sill	0.100	
E03i	Sill Insulated		
E04	Jamb	0.100	
E04i	Jamb Insulated		
E06	Intermediate floor within a dwelling	0.140	
E10	Eaves (insulation at ceiling level)	0.120	
E12	Gable (insulation at ceiling level)	0.250	
E16	Corner (normal)	0.180	
E17	Corner (inverted – internal area greater than external area)	0.000	
E18	Party wall between dwellings	0.240	
E20	Exposed floor (normal)	0.320	
E21	Exposed floor (inverted)	0.320	



## Delta 1 : Pre-Insulated Panel

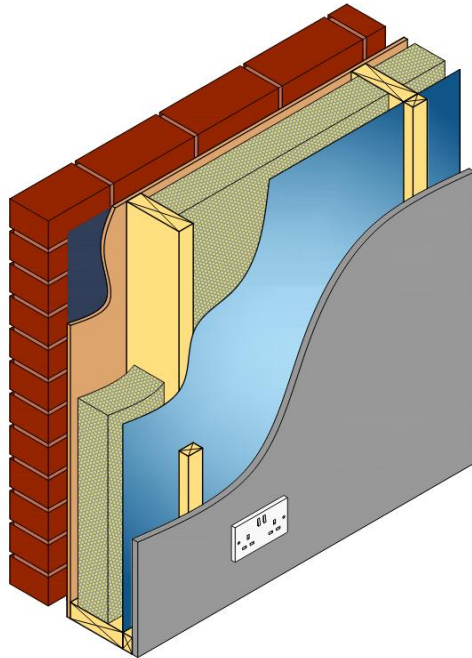
The Psi values shown opposite represent key junctions within a building for this specific wall system.

Please refer to your supply chain partners for PSI values relating to their element of your project e.g.: Slab edge, GRP Dormer, Balcony etc.

Detailed Psi value calculations are available upon placement of order.

## Psi Values

ID	Junction Description	SAP 10 'default' values $\Psi$	Delta 1 $\Psi$
E02	Other lintels (Steel)	1.000	0.263
E02	Other lintels (Timber)	1.000	0.075
E02i	Other lintels (Timber) Insulated		0.080
E03	Sill	0.100	0.043
E03i	Sill Insulated		0.044
E04	Jamb	0.100	0.044
E04i	Jamb Insulated		0.039
E06	Intermediate floor within a dwelling	0.140	0.067
E10	Eaves (insulation at ceiling level)	0.120	0.065
E12	Gable (insulation at ceiling level)	0.250	0.063
E16	Corner (normal)	0.180	0.063
E17	Corner (inverted – internal area greater than external area)	0.000	0.000
E18	Party wall between dwellings	0.240	0.204
E20	Exposed floor (normal)	0.320	0.053
E21	Exposed floor (inverted)	0.320	0.099



## Delta 2 : Pre-Insulated Panel

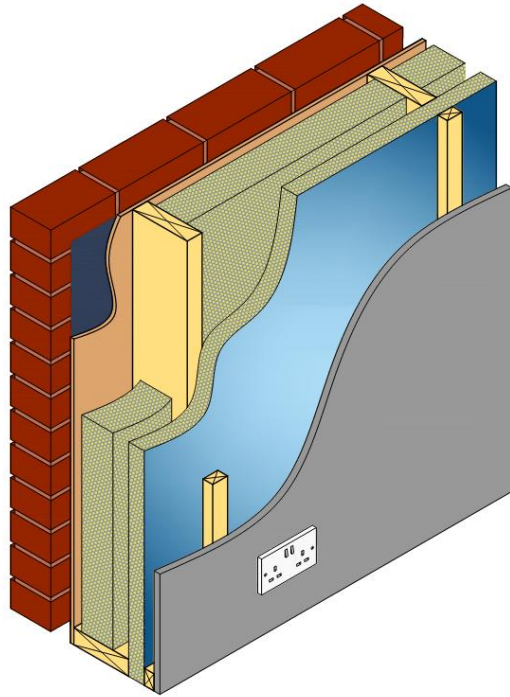
The Psi values shown opposite represent key junctions within a building for this specific wall system.

Please refer to your supply chain partners for PSI values relating to their element of your project e.g.: Slab edge, GRP Dormer, Balcony etc.

Detailed Psi value calculations are available upon placement of order.

## Psi Values

ID	Junction Description	SAP 10 'default' values $\Psi$	Delta 2 $\Psi$
E02	Other lintels (Steel)	1.000	0.236
E02	Other lintels (Timber)	1.000	0.068
E02i	Other lintels (Timber) Insulated		0.073
E03	Sill	0.100	0.035
E03i	Sill Insulated		0.038
E04	Jamb	0.100	0.041
E04i	Jamb Insulated		0.036
E06	Intermediate floor within a dwelling	0.140	0.050
E10	Eaves (insulation at ceiling level)	0.120	0.062
E12	Gable (insulation at ceiling level)	0.250	0.062
E16	Corner (normal)	0.180	0.073
E17	Corner (inverted – internal area greater than external area)	0.000	-0.011
E18	Party wall between dwellings	0.240	0.109
E20	Exposed floor (normal)	0.320	0.048
E21	Exposed floor (inverted)	0.320	0.090



## Delta 3 : Pre-Insulated Panel

The Psi values shown opposite represent key junctions within a building for this specific wall system.

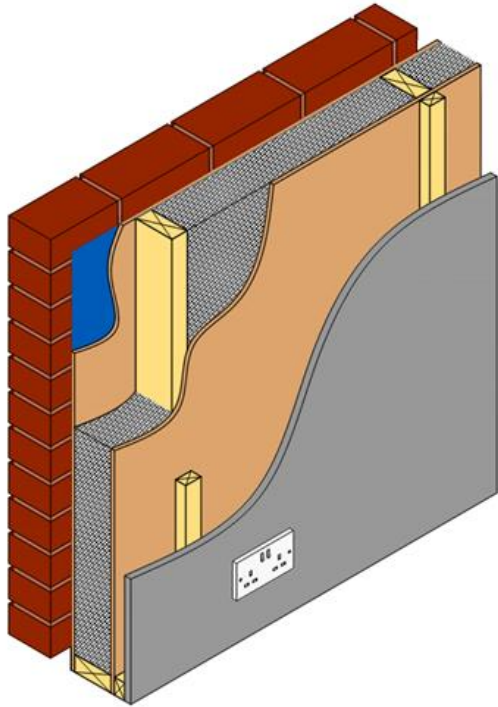
Please refer to your supply chain partners for PSI values relating to their element of your project e.g.: Slab edge, GRP Dormer, Balcony etc.

Detailed Psi value calculations are available upon placement of order.

## Psi Values

ID	Junction Description	SAP 10 'default' values $\Psi$	Delta 3 $\Psi$
E02	Other lintels (Steel)	1.000	0.207
E02	Other lintels (Timber)	1.000	0.069
E02i	Other lintels (Timber) Insulated		0.071
E03	Sill	0.100	0.030
E03i	Sill Insulated		0.031
E04	Jamb	0.100	0.046
E04i	Jamb Insulated		0.037
E06	Intermediate floor within a dwelling	0.140	0.038
E10	Eaves (insulation at ceiling level)	0.120	0.054
E12	Gable (insulation at ceiling level)	0.250	0.051
E16	Corner (normal)	0.180	0.049
E17	Corner (inverted – internal area greater than external area)	0.000	-0.017
E18	Party wall between dwellings	0.240	0.127
E20	Exposed floor (normal)	0.320	0.039
E21	Exposed floor (inverted)	0.320	0.087

## Psi Values



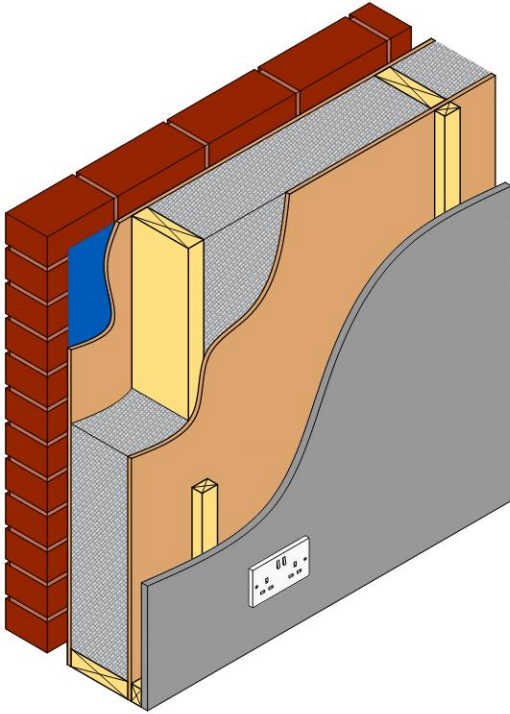
### Sigma II 89 : Closed Panel

The Psi values shown opposite represent key junctions within a building for this specific wall system.

Please refer to your supply chain partners for PSI values relating to their element of your project e.g.: Slab edge, GRP Dormer, Balcony etc.

Detailed Psi value calculations are available upon placement of order.

ID	Junction Description	SAP 10 'default' values $\Psi$	Sigma II 89 $\Psi$
E02	Other lintels (Steel)	1.000	
E02	Other lintels (Timber)	1.000	
E02i	Other lintels (Timber) Insulated		
E03	Sill	0.100	
E03i	Sill Insulated		
E04	Jamb	0.100	
E04i	Jamb Insulated		
E06	Intermediate floor within a dwelling	0.140	
E10	Eaves (insulation at ceiling level)	0.120	
E12	Gable (insulation at ceiling level)	0.250	
E16	Corner (normal)	0.180	
E17	Corner (inverted – internal area greater than external area)	0.000	
E18	Party wall between dwellings	0.240	
E20	Exposed floor (normal)	0.320	
E21	Exposed floor (inverted)	0.320	



## Sigma II 140 : Closed Panel

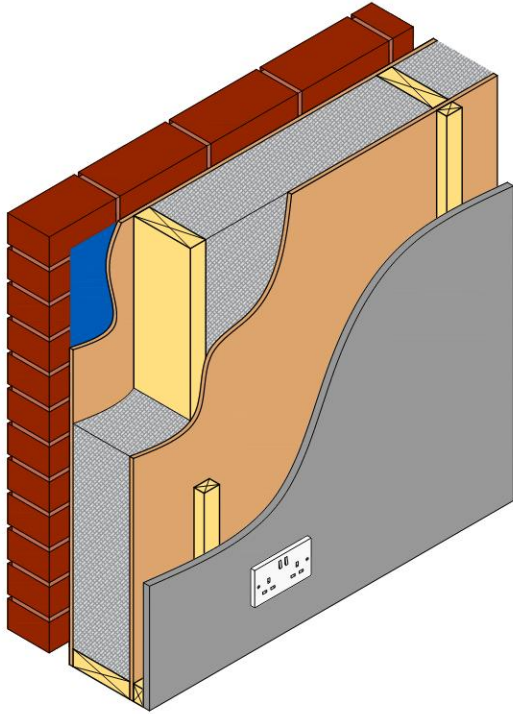
The Psi values shown opposite represent key junctions within a building for this specific wall system.

Please refer to your supply chain partners for PSI values relating to their element of your project e.g.: Slab edge, GRP Dormer, Balcony etc.

Detailed Psi value calculations are available upon placement of order.

## Psi Values

ID	Junction Description	SAP 10 'default' values $\Psi$	Sigma II 140 $\Psi$
E02	Other lintels (Steel)	1.000	0.233
E02	Other lintels (Timber)	1.000	0.074
E02i	Other lintels (Timber) Insulated		0.076
E03	Sill	0.100	0.045
E03i	Sill Insulated		0.047
E04	Jamb	0.100	0.045
E04i	Jamb Insulated		0.045
E06	Intermediate floor within a dwelling	0.140	0.041
E10	Eaves (insulation at ceiling level)	0.120	0.060
E12	Gable (insulation at ceiling level)	0.250	0.058
E16	Corner (normal)	0.180	0.054
E17	Corner (inverted – internal area greater than external area)	0.000	-0.027
E18	Party wall between dwellings	0.240	0.114
E20	Exposed floor (normal)	0.320	0.044
E21	Exposed floor (inverted)	0.320	0.069



## Sigma II 184 : Closed Panel

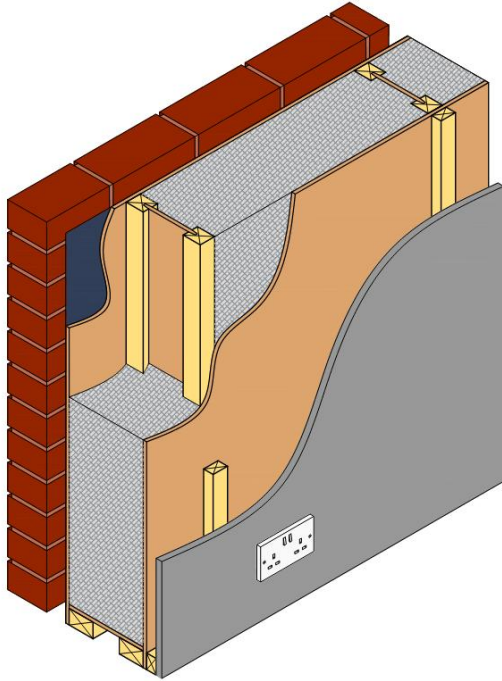
The Psi values shown opposite represent key junctions within a building for this specific wall system.

Please refer to your supply chain partners for PSI values relating to their element of your project e.g.: Slab edge, GRP Dormer, Balcony etc.

Detailed Psi value calculations are available upon placement of order.

## Psi Values

ID	Junction Description	SAP 10 'default' values $\Psi$	Sigma II 184 $\Psi$
E02	Other lintels (Steel)	1.000	0.268
E02	Other lintels (Timber)	1.000	0.073
E02i	Other lintels (Timber) Insulated		0.074
E03	Sill	0.100	0.036
E03i	Sill Insulated		0.039
E04	Jamb	0.100	0.047
E04i	Jamb Insulated		0.041
E06	Intermediate floor within a dwelling	0.140	0.044
E10	Eaves (insulation at ceiling level)	0.120	0.059
E12	Gable (insulation at ceiling level)	0.250	0.053
E16	Corner (normal)	0.180	0.054
E17	Corner (inverted – internal area greater than external area)	0.000	-0.026
E18	Party wall between dwellings	0.240	0.107
E20	Exposed floor (normal)	0.320	0.046
E21	Exposed floor (inverted)	0.320	0.071



## Sigma II 195 : Closed Panel

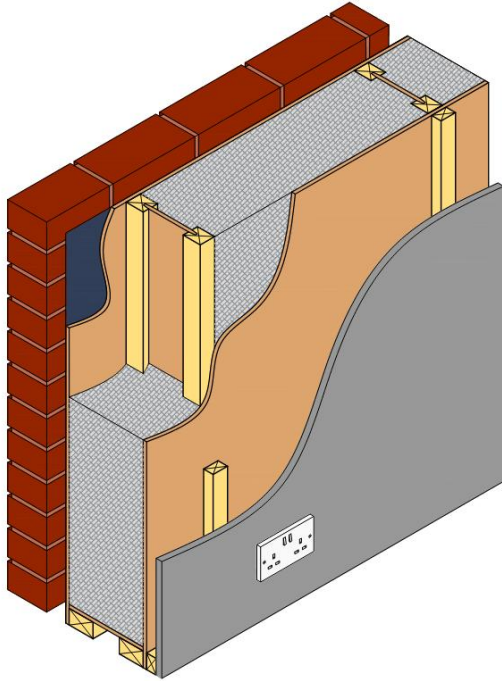
The Psi values shown opposite represent key junctions within a building for this specific wall system.

Please refer to your supply chain partners for PSI values relating to their element of your project e.g.: Slab edge, GRP Dormer, Balcony etc.

Detailed Psi value calculations are available upon placement of order.

## Psi Values

ID	Junction Description	SAP 10 'default' values $\Psi$	Sigma 195 $\Psi$
E02	Other lintels (Timber)	1.000	0.035
E03	Sill	0.100	0.030
E04	Jamb	0.100	0.037
E06	Intermediate floor within a dwelling	0.140	0.050
E10	Eaves (insulation at ceiling level)	0.120	0.059
E12	Gable (insulation at ceiling level)	0.250	0.048
E16	Corner (normal)	0.180	0.057
E17	Corner (inverted – internal area greater than external area)	0.000	-0.029
E18	Party wall between dwellings	0.240	0.074



## Sigma II 235 : Closed Panel

The Psi values shown opposite represent key junctions within a building for this specific wall system.

Please refer to your supply chain partners for PSI values relating to their element of your project e.g.: Slab edge, GRP Dormer, Balcony etc.

Detailed Psi value calculations are available upon placement of order.

## Psi Values

ID	Junction Description	SAP 10 'default' values $\Psi$	Sigma 235 $\Psi$
E02	Other lintels (Timber)	1.000	0.038
E03	Sill	0.100	0.022
E04	Jamb	0.100	0.038
E06	Intermediate floor within a dwelling	0.140	0.033
E10	Eaves (insulation at ceiling level)	0.120	0.059
E12	Gable (insulation at ceiling level)	0.250	0.045
E16	Corner (normal)	0.180	0.049
E17	Corner (inverted – internal area greater than external area)	0.000	-0.031
E18	Party wall between dwellings	0.240	0.065